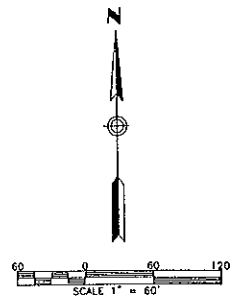
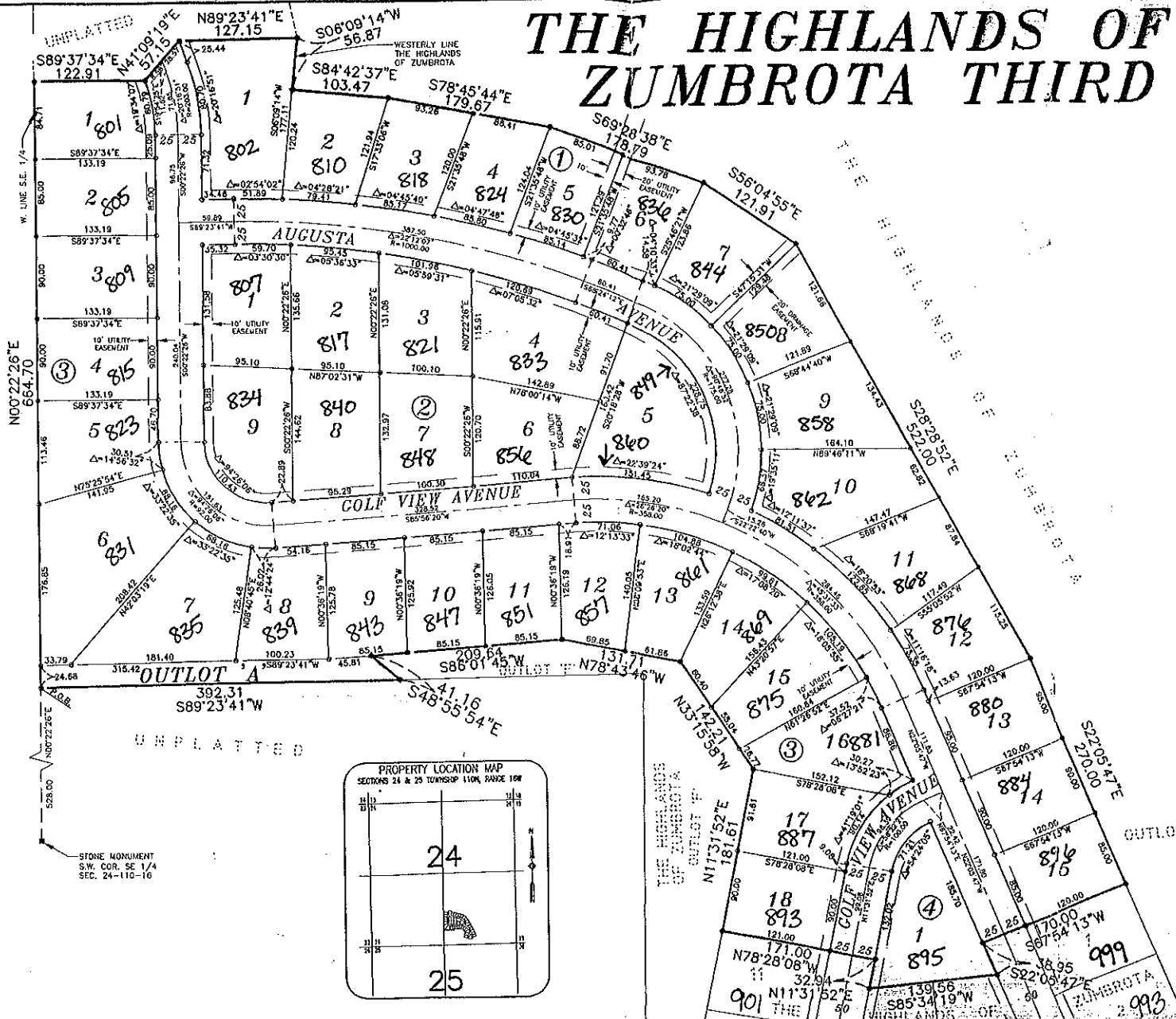


THE HIGHLANDS OF ZUMBROTA THIRD

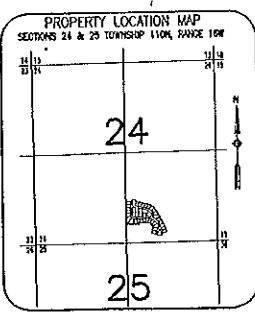


UNPLATTED



UNPLATTED

STONE MONUMENT
S.W. COR. SE 1/4
SEC. 24 - 110-16



NOTE:
ALL MONUMENTS SHOWN UNLESS OTHERWISE NOTED ARE 5/8\"/>

UTILITY EASEMENT DEFINED:
An unobstructed easement for the construction and maintenance of all necessary underground or surface public utilities including rights to conduct storage and turning of said easement.

PREMIUM EASEMENT DEFINED:
An unobstructed easement for the operation and maintenance of systems, both surface and underground, serving water, sewer, and other uses.

BIGELOW HOMES
Tradition. Excellence.

Lic. # BC-10431673
3428 Lakeridge Place NW • Suite 200
Rochester, MN 55901
Tel: 507.529.1161 • Fax: 507.529.5361
www.bigelowhomes.net