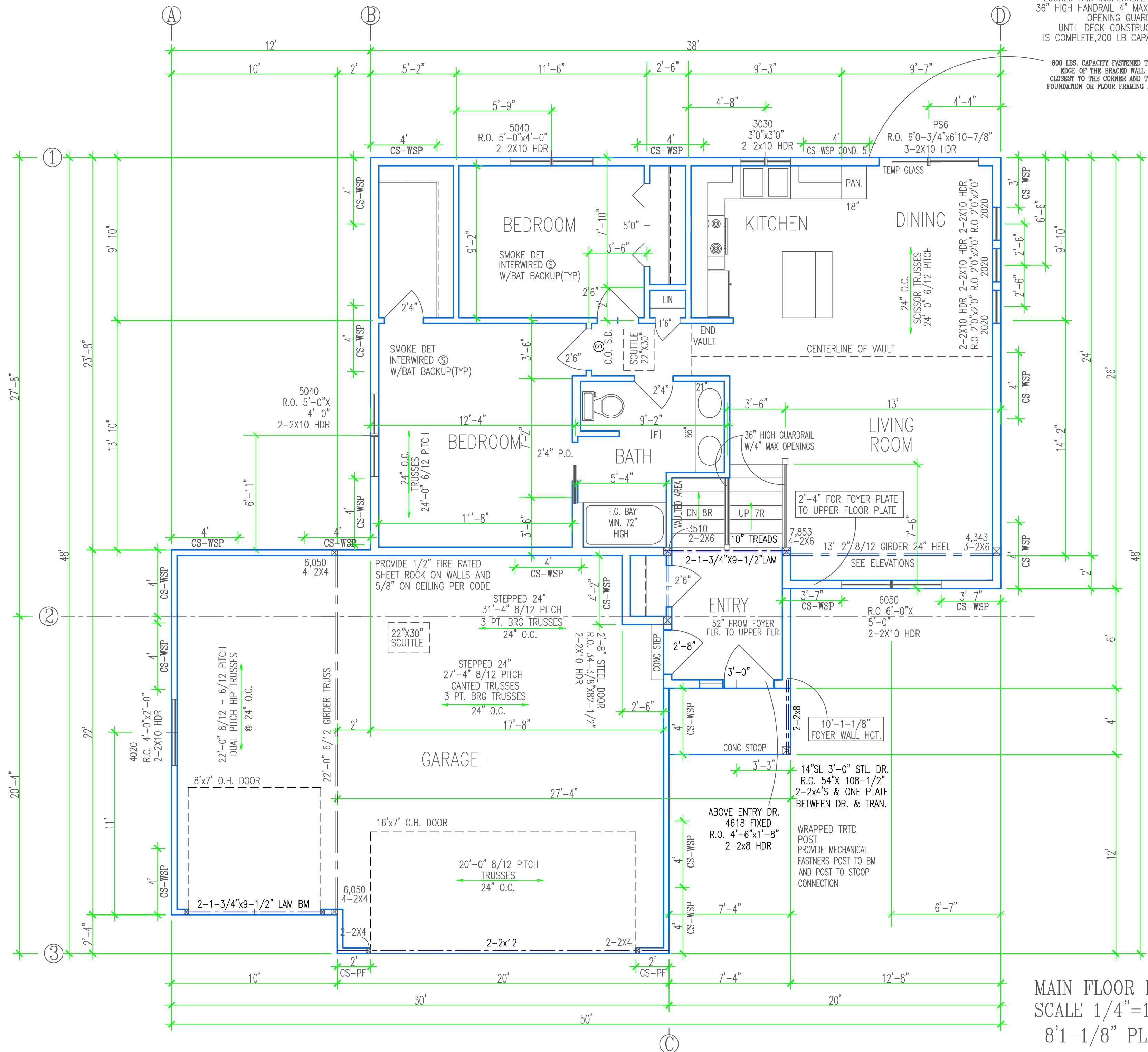


VERIFY ALL ROUGH OPENINGS  
WITH ANDERSEN WINDOW  
SUPPLIER 200 SERIES SLIDER



MAIN FLOOR PLAN  
SCALE 1/4"=1'-0"  
8'1-1/8" PLATE

PATIO DOOR TO REMAIN  
LOCKED AND INOPERABLE WITH  
36" HIGH HANDRAIL 4" MAX O.C.  
OPENING GUARDRAIL  
UNTIL DECK CONSTRUCTION  
IS COMPLETE, 200 LB CAPACITY

800 LBS. CAPACITY FASTENED TO THE  
EDGE OF THE BRACED WALL PANEL  
CLOSEST TO THE CORNER AND TO THE  
FOUNDATION OR FLOOR FRAMING BELOW

THESE PLANS ARE INTENDED BY BIGELOW ENTERPRISES INC AS A GUIDE FOR BUILDERS WHO ARE KNOWLEDGEABLE ABOUT NORMAL CONSTRUCTION STANDARDS AND LOCAL CODES AND PRACTICES. BIGELOW ENTERPRISES INC WILL REVISE ITS PLANS TO CORRECT ANY ERRORS OR OMISSIONS DISCOVERED AND REPORTED BY THE BUILDER BEFORE START OF HIS WORK, BUT ASSUMES NO RESPONSIBILITY FOR ANY ERRORS, OMISSIONS OR IMPROPER CONSTRUCTION THEREAFTER.

These plans have been reviewed and approved for construction as drawn. Additional changes will require a change order form.

**BIGELOW  
HOMES**

*Tradition. Excellence.*

3428 Limerick Place NW Suite 200 Rochester, MN 55901 (507-529-1161)

SOUTH FORK MOD. #8-1  
2313746

PLAN	1/3	ROUGH
SO. FT.	1009	REV
BY: B.B.		
SHEET: OF:		FINAL 06-20-23